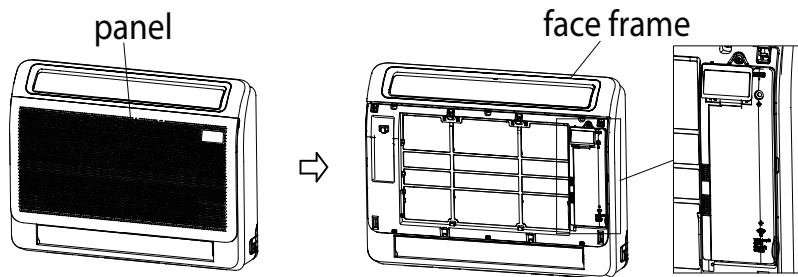
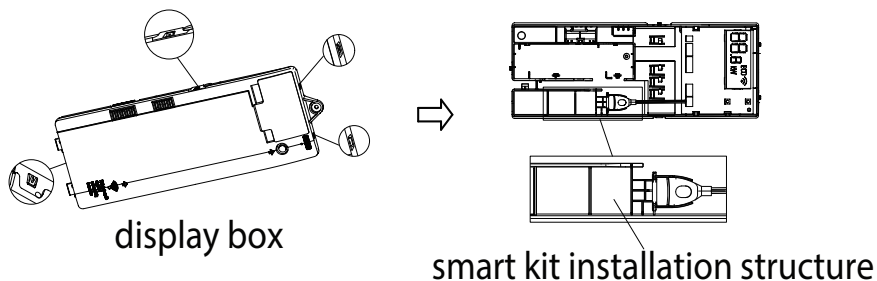


INSTALL THE SMART KIT (WIRELESS MODULE).

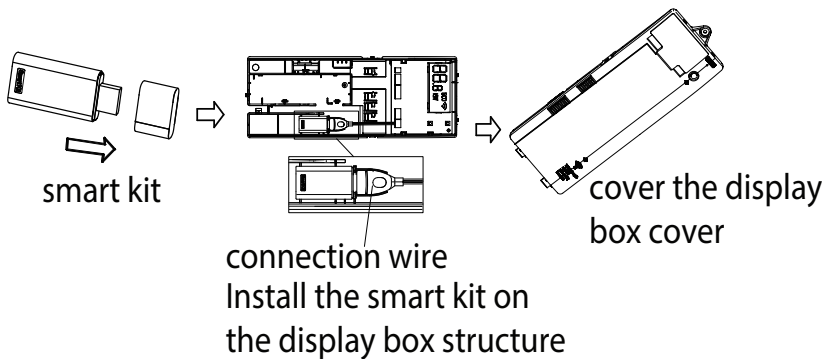
1) Open the panel and the display box is on the face frame.



2) Remove the four clips of the display box, open the cover of the display box, the smart kit installation structure is on the display box.



3) Remove the protective cap of the smart kit, install on the display box structure and connect with the connection wire, and then cover the display box cover.



4) Install the display box on the face frame, and then cover the panel.